

TeVISTA Enterprise is a secure, distributed and comprehensive network management system that monitors the entire network infrastructure.

TeVISTA Enterprise enables you to visualise, monitor and pro-actively manage your network. It automatically discovers and polls SNMP devices, allows you to collect network statistics and automatically generates Trend Reports. The distributed polling architecture makes it easy to manage networks that span multiple sites. In the event of a network problem (device failure, high utilisation, low disk capacity) TeVISTA Enterprise will generate an email or pager alert. You can manage your network remotely with the Windows Client and JAVA WEB Consoles and export map topology, trend statistics and event log entries to other databases.

Enterprise extends the reach of traditional SNMP management solutions and allows you to monitor network activity from every Workstation or Server on the network. The product uses Chevin's unique software probes known as TeVISTA Visibility Agents. The Visibility Agent is a unique piece of software providing full Rmon 2 type information that is loaded on to non-dedicated machines (Workstation or Servers). The Visibility Agent binds itself to the Network Interface Card (NIC) within the machine that it is loaded on allowing it to see and collect information on all the traffic in a collision domain/broadcast domain as well as capturing packets.



Key Features

- > Remote console access - JAVA Web Client
- > Unlimited remote SNMP pollers
- > Full network utilisation reports
- > WAN reports
- > Network trend reports
- > Comprehensive network discovery
- > Intuitive GUI
- > Distributed software probes
- > Expert analysis at source
- > Historic and real time packet capture - dynamic analysis on demand
- > Total visibility management console
- > SNMP reporter
- > Historic network statistics collection
- > Automated report generator
- > Alarm
- > Includes Wildpackets Etherpeek award winning analyser

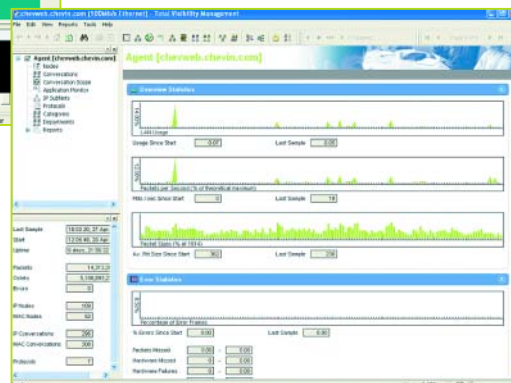
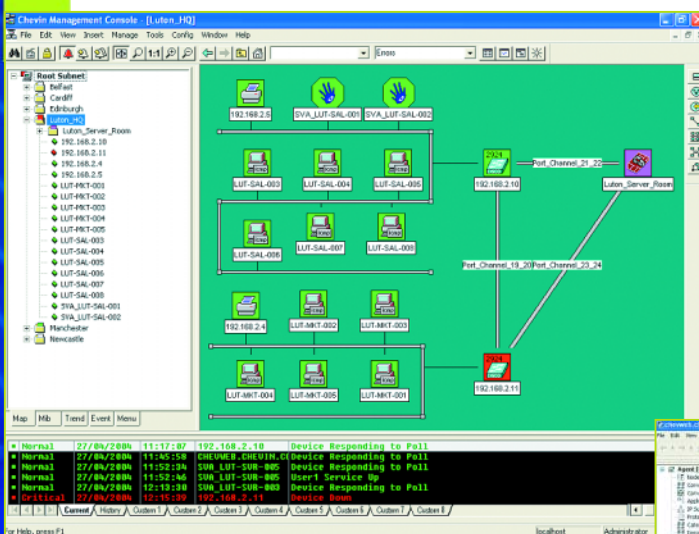
Key benefits

Managing distributed networks can be daunting. TeVISTA Enterprise makes the task much easier by combining granular SNMP information with detailed conversation and packet analysis presented to the network manager in a logical and useable format. Multiple layers within the GUI means the network can be broken down logically into geographical locations, sites, offices, subnets and key devices. Intelligent alarms allows real problems to be dealt with quickly and where necessary escalated automatically 90% of today's networks are fully switched to

the desktop. Traditional network monitoring tools and analysers rely heavily on hardware probes, which are expensive and cumbersome. As a consequence, Network Managers are forced to be selective about where they locate hardware probes and the associated costs can be prohibitive.

Chevin tackles this issue by providing software probes (TeVISTA Visibility Agents) that can be loaded onto every workstation or windows server, meaning unrivalled visibility of network traffic and analysis at an affordable price. Typically, a Chevin solution provides

hundreds of probes for the price of a single hardware equivalent.

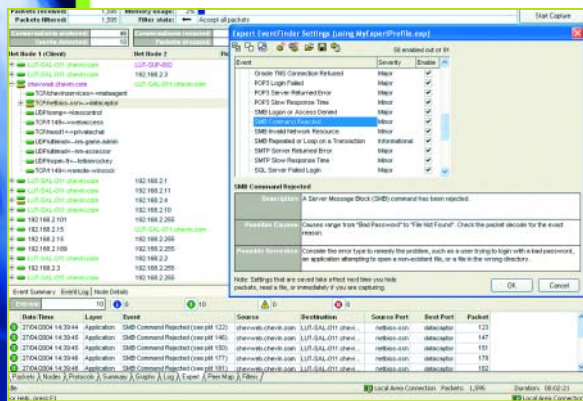


TeVISTA Enterprise includes the award winning Etherpeek protocol analyser providing expert fault diagnosis at source. Etherpeek is a feature rich expert analysis system. A highly intuitive problem solver means the Network Manager is able to interpret and resolve network problems much quicker and easier.

Total Visibility Management

Total Visibility Management allows the network manager to view all the information provided by the TeVISTA Visibility Agent (probe). This information includes:

- Node information - What devices are talking and what effect is it having on the broadcast/collision domain?
- Conversations - Who's talking to whom?
- Application Monitor - Which applications are being used and by whom?
- Protocol breakdown, IP and Mac conversations.
- Categories and Departments - Which groups of users are using the network?
- Reports - How busy is the LAN?



Expert Analysis at Source

Having a probe on every desktop and server potentially means that the network manager can begin packet capture, troubleshooting and expert analysis from every user machine and server. This means the network manager can 'see' the exact point on the network where the fault is reported.

Key benefits of the TeVISTA Visibility Agent

- Complete 'visibility' of a network from a user or server perspective massively reduces the 'time to fix' for a problem - no travelling to site, and none of the associated hassles of using a hardware probe (physical deployment or the switch to 'mirror' traffic)
- Direct analysis of traffic provides a view completely unfiltered by the switch
- Any Visibility Agent, at any site, anywhere in the network can provide instant access to full packet-level detail
- Rewind the tape - unique 'Expert Analysis on Demand' technology allows full packet-level detail to be analysed retrospectively, going back hours or days, to make troubleshooting of intermittent problems possible
- Low resource overhead means even lower specification PCs can host a Visibility Agent without impacting the user or server primary tasks

Expert Analysis On Demand - Historic Packet Capture

There's nothing worse than a user reporting an intermittent problem after the event. Historic Capture allows the network manager to configure an extended capture on a users machine for any specified period of time, which means that we can be certain of capturing the problem whenever it might occur. Creating filters to, for example, only capture HTTP traffic can further enhance the troubleshooting capability of this feature. In keeping with the essence of Chevin technology, this facility is easy to use and 'bandwidth friendly' for remote usage.

T E C H N I C A L S P E C I F I C A T I O N S

System Requirements

- RIM BlackBerry 6200/6500/7200 supporting BlackBerry Java 3.6 supplied with email service by local service provider.
- Portal: PC with Windows 2000/XP. 2.0GHz CPU, 512MB RAM,
- Synthetic User: PC with Windows 2000/XP. 1.0GHz CPU, 256MB RAM

Licensing

TeVISTA Performance Manager is licensed by the number of Synthetic User Probes deployed. Each Synthetic User can monitor many BlackBerry devices and other remote network services.

TeVISTA PDA for RIM BlackBerry is a management plug-in for the base platform, and licensed separately.

TeVISTA Synthetic User for RIM BlackBerry is licensed by the number of BlackBerry devices to be tested.

EUROPEAN SALES & MARKETING

CHEVIN LIMITED

960 Capability Green
Luton
Bedfordshire
LU1 3PE
UK

Tel +44 (0) 1582 635030

Fax +44 (0) 1582 635230

Email info@chevin.com

www.chevin.com